

**Anti-Plexin B1 (C-terminal region) Antibody**  
**Catalog # AN1914****Specification**

---

**Anti-Plexin B1 (C-terminal region) Antibody - Product Information**

Application	WB
Primary Accession	<a href="#">O43157</a>
Reactivity	Bovine
Host	Rabbit
Clonality	Rabbit Polyclonal
Isotype	IgG
Calculated MW	232298

**Anti-Plexin B1 (C-terminal region) Antibody - Additional Information**

Gene ID	5364
<b>Other Names</b>	
Sema4D, CD100	

**Dilution**

WB~~1:1000

**Storage**

Maintain refrigerated at 2-8°C for up to 6 months. For long term storage store at -20°C in small aliquots to prevent freeze-thaw cycles.

**Precautions**

Anti-Plexin B1 (C-terminal region) Antibody is for research use only and not for use in diagnostic or therapeutic procedures.

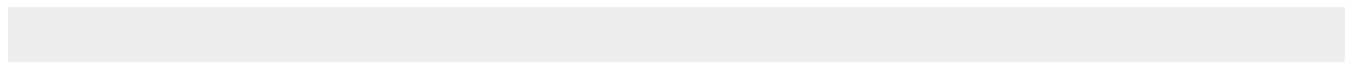
**Shipping**

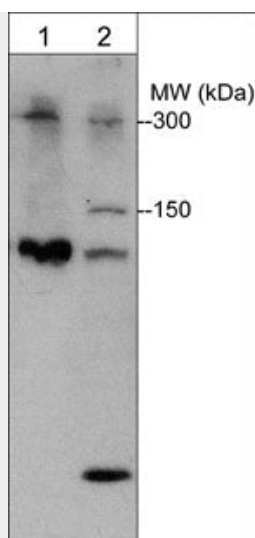
Blue Ice

**Anti-Plexin B1 (C-terminal region) Antibody - Protocols**

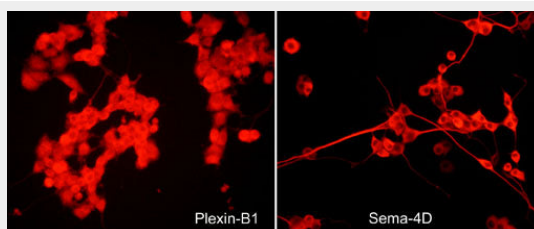
Provided below are standard protocols that you may find useful for product applications.

- [Western Blot](#)
- [Blocking Peptides](#)
- [Dot Blot](#)
- [Immunohistochemistry](#)
- [Immunofluorescence](#)
- [Immunoprecipitation](#)
- [Flow Cytometry](#)
- [Cell Culture](#)

**Anti-Plexin B1 (C-terminal region) Antibody - Images**



Western blot of mouse liver (lane 1) and rat PC12 cells (lane 2). The blot was probed with rabbit polyclonal Plexin B1 antibody (PP1841) at a dilution of 1:1000.



Immunocytochemical labeling in rat PC12 cells differentiated with NGF. The cells were probed with rabbit polyclonal Plexin B1 (PP1841) and mouse monoclonal Sema-4D (SM1881) antibodies, then the antibodies were detected using appropriate secondary antibody conjugated to DyLight® 594.

### Anti-Plexin B1 (C-terminal region) Antibody - Background

Plexins are a family of large integral membrane proteins that complex with neuropilins to form semaphorin co-receptors. The extracellular region of plexins contains a semaphorin domain, multiple glycine-rich motifs, and MET-related sequences. The cytoplasmic region contains a Sex/Plexin domain and putative tyrosine phosphorylation sites that mediate signal transduction after activation. In addition, Plexin B1 and B2 contain cleavage sites for subtilisin-like proprotein convertases. These cleavage sites may be important for regulating assembly of heterodimeric receptors or release of the extracellular domain. Plexin-B1 is expressed as a 300 kDa precursor protein that can be cleaved into a 200 kDa a-subunit and a 100 kDa b-subunit. This plexin is the receptor for the class IV semaphorin, Sema-4D. Sema-4D activation of Plexin B1 recruits and activates c-Met, which can promote cell survival, migration, and angiogenesis